



Mining Operations

www.opssuite.co.za

Powered by **mendix**™



The drive for operational efficiency and the increasing competitive pressure of the global economy are pushing companies throughout the mining industry to strategically focus on digital transformation as a foundation for sustainable growth.

These challenges have brought mining operations to the center stage of industrial innovation, where digitalization is fast becoming the key driver of productivity, safety, and profitability.

As mining activities become more complex and geographically dispersed, equipment lifecycles shorten, and regulatory compliance increasingly shapes operational processes and infrastructures.

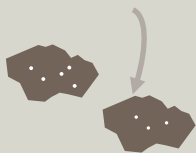
In this challenging environment, there is significant room for improvement in reducing unplanned downtime, improving resource utilization, and minimizing safety risks that lead to missed production targets and growth opportunities.

Today, successful mining companies are those who combine real-time operational visibility with agile, data-driven decision-making to achieve faster response times, greater accountability, and higher asset availability.

More and more mining executives realize that there is a pressing need to integrate teams, systems, and processes across the value chain—from underground operations to control rooms and management offices. Seamless digital integration is rapidly becoming a basic business requirement.

Trends and challenges in the Mining Industry

Lower Grade



Go Deeper



HSSE



Costs



Output



OWN THE DISRUPTION



Mining Operations

www.opssuite.co.za

Powered by **mendix**™



OpsSuite, built on the Mendix low-code platform, understands these challenges and offers a Mining Operations Solution designed to enable efficient digital transformation.

The solution digitizes critical processes such as underground equipment pre- and post-operation checklists, technical support job cards, and breakdown case resolution.

It enables real-time communication and integration between underground teams, engineering, control rooms, and management, ensuring faster decision-making and accountability.

Live dashboards provide actionable insights on equipment utilization, health, and maintenance schedules, while automated workflows reduce errors and improve traceability.

Designed to scale, OpsSuite allows additional modules and integrations such as inventory monitoring, predictive maintenance, and IoT connectivity to be seamlessly added as operations mature.

A gear icon with three interlocking gears, one of which is highlighted in orange.

Production Management

OpsSuite Production Management acts as the digital orchestrator, efficiently coordinating and optimizing manufacturing processes, ensuring seamless operations and heightened productivity.

A checkmark icon inside a circle, with a faint background image of a person wearing a hard hat.

Quality Management

OpsSuite Quality Management serves as a precision tool, systematically monitoring, analyzing, and enhancing every aspect of the production process to ensure optimal quality standards are consistently met.

A bar chart icon with a line graph overlaying it, set against a dark blue background.

Insights

OpsSuite Insights and KPI dashboards empowers users to visualize and interpret complex data, providing actionable insights that drive informed decision-making and strategic planning.

OWN THE DISRUPTION



Mining Operations

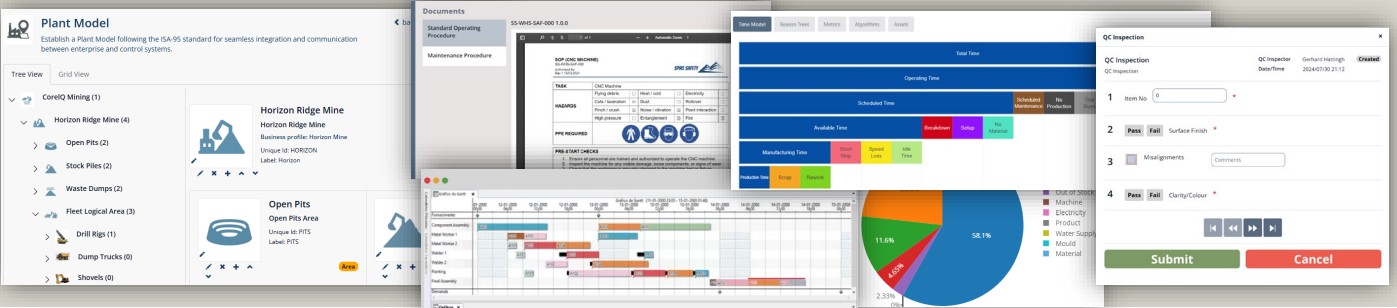
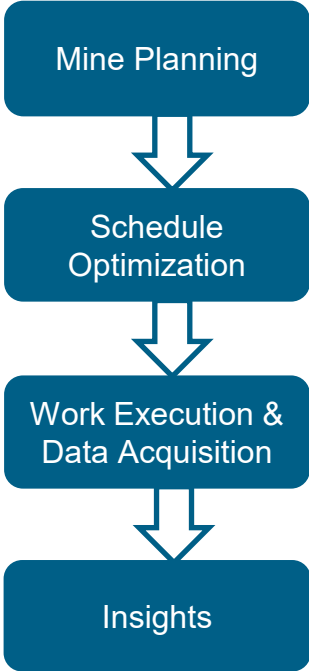
www.opssuite.co.za

Powered by **mendix**™



Key Capabilities

- **Digitised Checklists:** Pre- and post-operation machine checks captured digitally, reducing errors and ensuring compliance.
- **Real-Time Integration:** Seamless communication across underground teams, control room, engineering, and line managers.
- **Actionable Dashboards:** Live monitoring of equipment utilisation, breakdowns, maintenance schedules, and inventory.
- **Automated Workflows:** Digital job cards and traceable breakdown case resolution.
- **Scalable Platform:** Modular extensions for future needs (e.g., inventory optimisation, advanced analytics, IoT integration).



OWN THE DISRUPTION