



Food & Beverage

www.opssuite.co.za

Powered by **mendix**™



The drive for operational efficiency and the increasing competitive pressure of the global economy are pushing companies throughout the Food & Beverage industry to strategically focus on digital transformation as a foundation for sustainable growth.

These challenges have brought Food & Beverage operations to the center stage of industrial innovation, where digitalization is fast becoming the key driver of quality, compliance, and profitability

As consumer demands shift rapidly, product lifecycles shorten, and regulatory compliance increasingly shapes production processes and supply chains, the need for agility and transparency has never been greater.

In this challenging environment, there is significant room for improvement in reducing downtime, optimizing batch execution, minimizing waste, and ensuring end-to-end traceability that directly impact customer trust, margins, and growth opportunities.

Today, successful Food & Beverage companies are those who combine real-time operational visibility with agile, data-driven decision-making to achieve faster response times, greater accountability, and higher production efficiency.

More and more Food & Beverage executives realize that there is a pressing need to integrate teams, systems, and processes across the value chain from production lines to quality labs, supply chain operations, and management offices. Seamless digital integration is rapidly becoming a basic business requirement.

Trends and challenges in the Food & Beverage Industry

**Food Safety
Compliance**



**Product
Innovation Cycles**



**Quality &
Traceability**



**Rising Input
Costs**



**Sustainability
Goals**



OWN THE DISRUPTION



Food & Beverage

www.opssuite.co.za

Powered by **mendix**™



OpsSuite, built on the Mendix low-code platform, understands these challenges and offers a Food & Beverage Operations Solution designed to enable efficient digital transformation.

The solution digitizes critical processes such as batch production records, HACCP and ISO compliance checklists, quality inspections, and recall management workflows.

It enables real-time communication and integration between production lines, quality labs, maintenance teams, supply chain, and management, ensuring faster decision-making, accountability, and compliance.


Live dashboards provide actionable insights online performance, product quality, downtime, and inventory levels, while automated workflows reduce errors and improve traceability.

Designed to scale, OpsSuite allows additional modules and integrations such as recipe and batch management, predictive maintenance, ERP/MES/LIMS connectivity, and IoT monitoring to be seamlessly added as operations mature.



Production Management

OpsSuite Production Management acts as the digital orchestrator, efficiently coordinating and optimizing manufacturing processes, ensuring seamless operations and heightened productivity.



Quality Management

OpsSuite Quality Management serves as a precision tool, systematically monitoring, analyzing, and enhancing every aspect of the production process to ensure optimal quality standards are consistently met.



Insights

OpsSuite Insights and KPI dashboards empowers users to visualize and interpret complex data, providing actionable insights that drive informed decision-making and strategic planning.



Food & Beverage

www.opssuite.co.za

 Powered by **mendix™**


Key Capabilities



Production & Batch Orchestration: Manage, schedule, and coordinate multiple production lines and batches (including recipe/formulation control, versioning, and changeovers) all within a unified platform. This ensures consistency, reduces lead times, and handles product variants and scale-ups.



Quality, Compliance & Audit Management: Digitize quality inspections, HACCP/ISO checklists, nonconformance tracking, and audit workflows. Enable full traceability and fast recall capabilities by linking quality data with production and batch records.



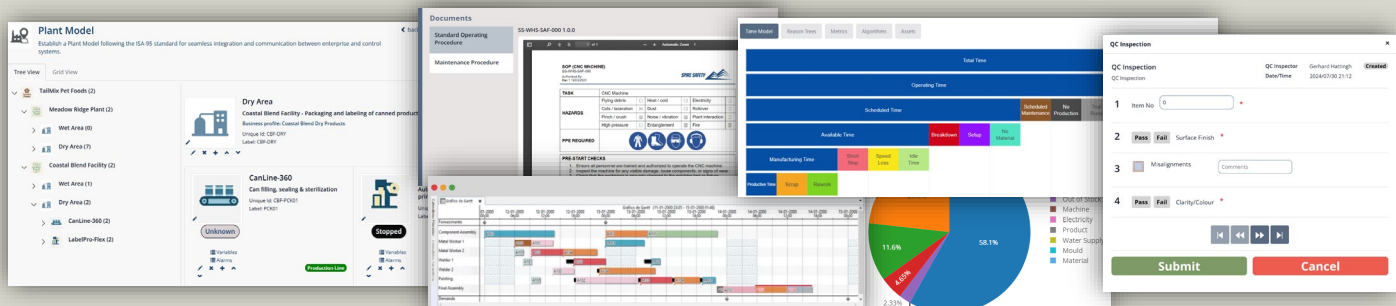
Real-Time Monitoring & KPIs Dashboards: Provide live dashboards and visual reporting for metrics such as OEE (overall equipment effectiveness), yield, downtime, quality yield, throughput, and waste. This gives management and production teams timely insight to act and improve.



Digital Workflows & Task Automation: Automate operator tasks, shift handovers, maintenance requests, approvals, notifications, and escalations. Eliminate paper forms, reduce human error, and ensure standard processes are consistently followed.



Scalable Integrations & Extensibility: Seamlessly integrate with ERP, MES, LIMS, IoT sensors, SCADA systems, and other digital systems. Enable modular add-ons like predictive maintenance, inventory and supply chain visibility, energy / sustainability analytics, and advanced analytics as operations mature.



OWN THE DISRUPTION